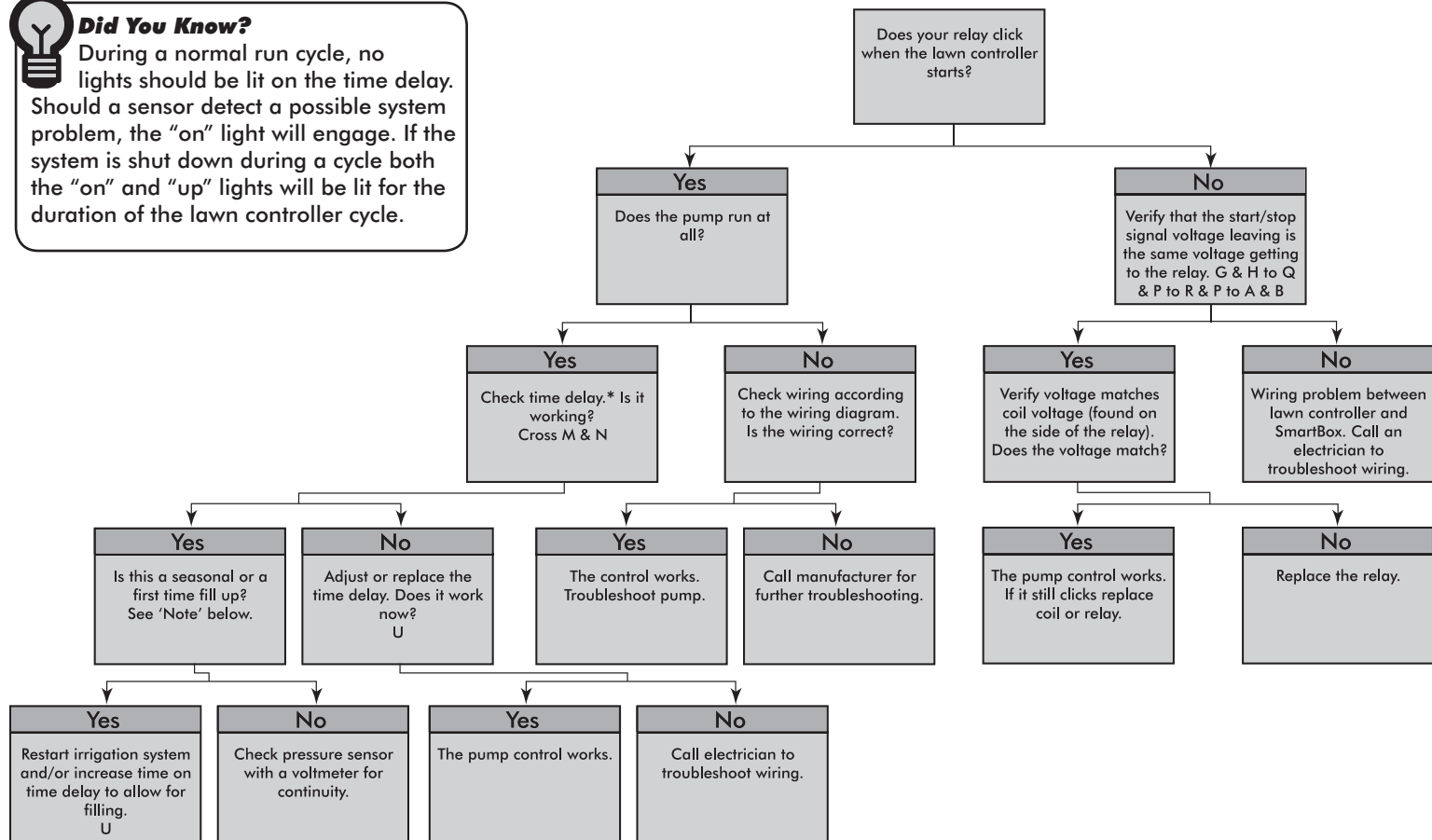


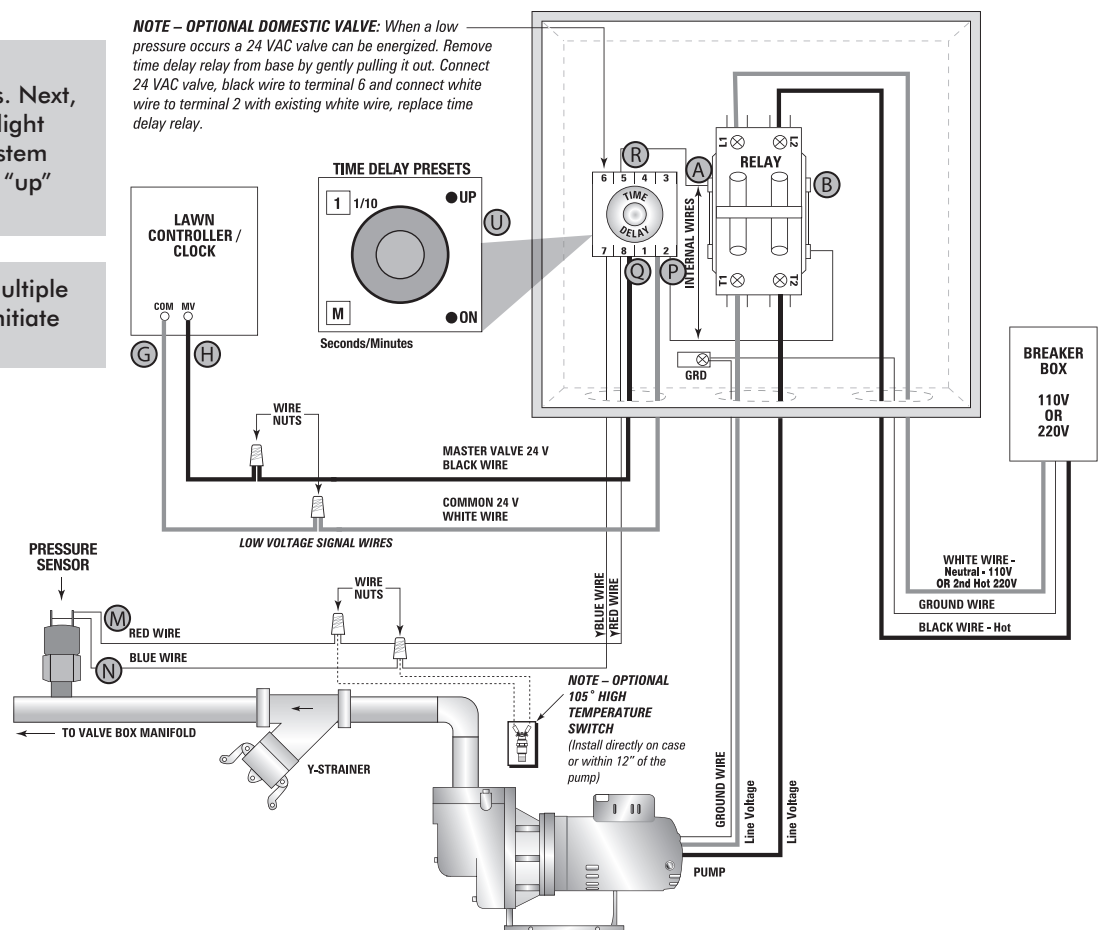
**Did You Know?**  
 During a normal run cycle, no lights should be lit on the time delay. Should a sensor detect a possible system problem, the "on" light will engage. If the system is shut down during a cycle both the "on" and "up" lights will be lit for the duration of the lawn controller cycle.



**\* Checking the Time Delay!**  
 Turn the time delay down to 5 seconds. Next, cross the red and blue wire. The "on" light should turn on. After 5 seconds the system should shut off and both the "on" and "up" lights should be on.

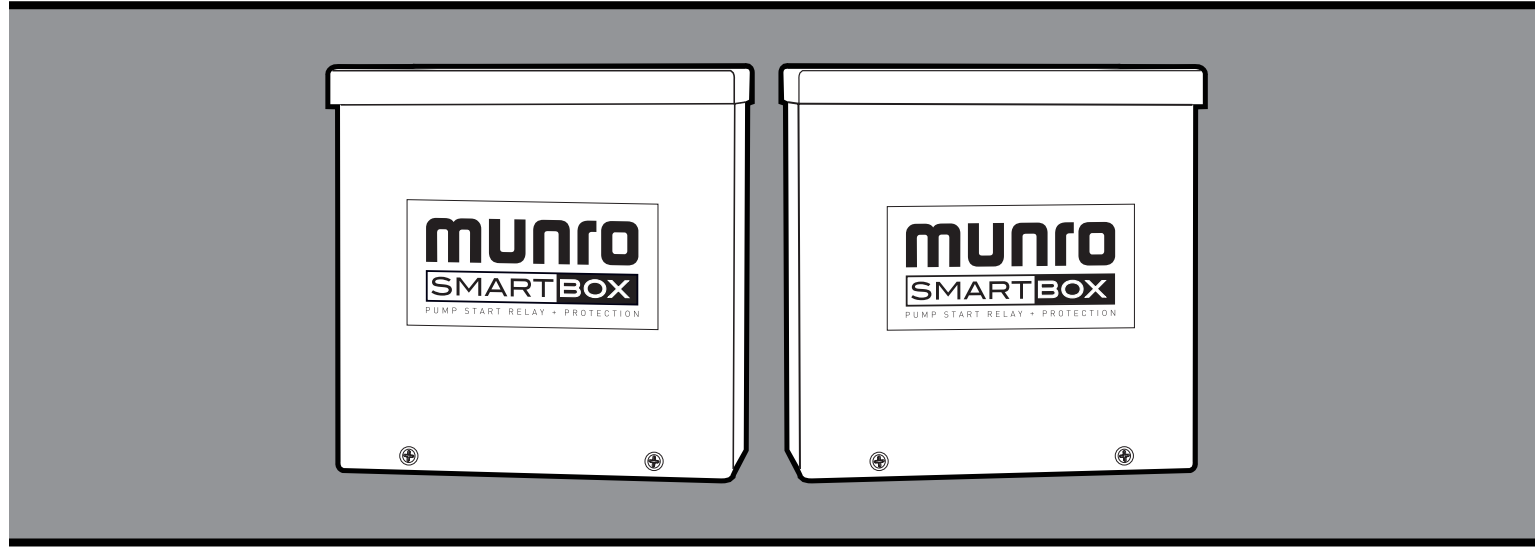
**Note:** Filling system lines may require multiple run cycles to build enough pressure to initiate the sensor.

Call Munro technical support for any questions relating to this product.  
 Toll Free: 1.800.942.4270



# OWNER'S MANUAL

## MUNRO SMARTBOX SERIES



Installation - Operation - Parts

Part Number	Description	External Packaged Components
MPLC24	Pump protection from low pressure or run-dry	20 PSI Sensor
MPLC24T	Pump protection from low pressure, run dry and high temperature due to dead head	20 PSI Sensor and 105° temperature sensor
MPLC24R	System shut-down from low pressure sensor, adjustable 10 minute timer will automatically restart pump to check if problem has been resolved	20 PSI Sensor
MPLC24RT	System shut-down from low pressure or high temperature sensor, an adjustable 10 minute timer will automatically restart pump to check if problem has been resolved	20 PSI Sensor and 105° temperature sensor

1.800.942.4270  
 www.munropump.com



# Typical SmartBox Installation

**NOTE:**  
Refer to specific wiring diagram located on inside cover of enclosure.

Step 1

**Turn Breaker "OFF"**

- Never work with electrical wiring on a live circuit.



Step 2

**Plumb for Sensors**

- Pressure Sensor - 1/4" NPT
  - Install on discharge side of pump. Place the pressure sensor after the y-strainer, or before a check valve.
- Optional High Temperature Sensor - 1/4" NPT
  - Install directly on pump case or within 12" of the pump.

Step 3

**Wire Sensor(s)**

- Wire sensor(s) to RED & BLUE leads in the SmartBox, secure with wire nuts.
  - \*Optional temperature sensor is wired in parallel with pressure sensor.
- NOTE - RED & BLUE lead wires can be placed on either terminal of the pressure sensor and high temperature sensor.*

Step 4

**Wire Lawn Controller**

- Locate the Master Valve (mv) and Common (com) inside Lawn Controller.
- Wire MV to BLACK wire lead in SmartBox, secure with wire nuts.
- Wire COM to WHITE wire lead in SmartBox, secure with wire nuts.

Step 5

**Wire Relay to Pump**

- Refer to wiring diagram on motor plate for proper voltage and wire placement.
- Refer to NEC wire cable chart for proper size of wire. Undersized wire can affect pump performance.

Step 6

**Wire Power Supply**

- Run power supply wires from breaker box (110 v or 220 v).
- Attach GREEN grounding wire.
- Attach BLACK HOT to L2 on relay.
- Attach WHITE Neutral (110 v) / second HOT (220 v) to L1 on relay.

Step 7

**Turn Breaker "On"**

## WARNING

DO NOT ATTEMPT TO REWIRE OR ALTER WIRING IN THE SMARTBOX OR WARRANTY WILL BE VOIDED.  
DO NOT WIRE POWER DIRECTLY TO THE PRESSURE OR TEMPERATURE SENSOR. PRESSURE SENSOR WILL WORK WITH 24 VOLT ONLY.

